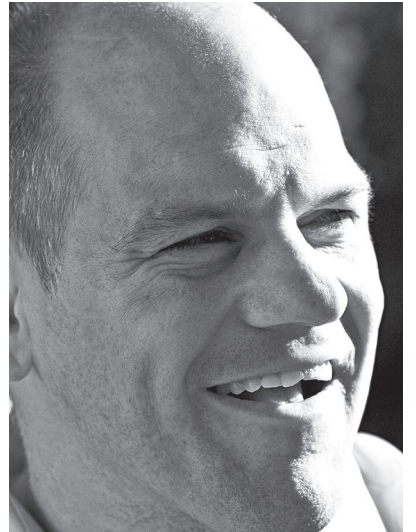


ANNUAL REPORT 2008



 ALPHA
Supported Living Services

“providing support, empowering choices, and encouraging individuality since 1974”

LETTER FROM THE CEO

Nonprofits play an unquestionably vital and meaningful role in our community. The services provided encompass a wide spectrum of necessary supports, but ultimately endeavor to improve the lives of those they serve. Since 1974, Alpha Supported Living Services has fulfilled the critical role of supporting and nurturing some of our most vulnerable citizens, people with developmental disabilities. Despite challenging economic times, Alpha Supported Living Services has persevered, continuing to provide highly respected support services that are recognized across the state. By achieving excellence and meeting the needs of people with developmental disabilities, the agency not only consistently improves and enhances the lives of those supported, but also enriches the community as a whole.

2008 continued to be a year of leadership, growth, and change for Alpha Supported Living Services. We look over the past year with amazement at all we have accomplished together, while still holding true to our original mission of providing quality services, empowering choices, and encouraging individuality. Having experienced the merger of Seattle Specialized Residential Support into the agency at the beginning of 2007, it seemed as if the dust had just settled when we were approached by another organization wishing to come under the umbrella of our highly regarded agency. In January 2008, Residence East merged into Alpha Supported Living Services. Following that merger, our agency was providing services to over 80 individuals with developmental disabilities living in homes in Seattle, Shoreline, Lake Forest Park, Bellevue, and Issaquah. Agency expansion did not end there.

In the pursuant months, several longstanding openings were filled at some of the East Branch homes. In addition, services were expanded to Woodinville with the opening of a home to serve four young adults with developmental disabilities. Coupled with further growth in the West Branch and new services in Bothell, Alpha Supported Living Services grew to serving over 90 people with developmental disabilities by the end of 2008.

Over the years, the agency has become known as an organization committed to providing quality services for people with developmental disabilities. The focus has always been squarely on ensuring each individual is afforded the right and responsibility to live successfully within the community. Power and choice of the individual are balanced with the highest health and safety standards, with paramount emphasis on treating each person with the utmost respect and dignity. It is this focus and drive that have brought Alpha Supported Living Services its well-earned reputation for excellence.

We look to 2009 with optimism that we will continue to uphold our agency mission and realize strategic goals, while exerting fiscal prudence amidst unprecedented economic uncertainty. With the support of our families, friends, and patrons, the dedication of our valued employees, and the unwavering inspiration provided by those to whom we provide support, we are certain 2009 will continue to be a successful and rewarding year for Alpha Supported Living Services.

Scott Livengood



Chief Executive Officer

2008 ACCOMPLISHMENTS



- Successful merger of Residence East into Alpha Supported Living Services
- Opening of separate office in Bellevue, thereby creating two distinct branches: Alpha West in Seattle and Alpha East in Bellevue
- Creation of two Branch Director positions to support the CEO in oversight of the agency
- Opening of new home in Woodinville to serve four young adults with developmental disabilities
- Filled several longstanding vacancies in the east branch
- Expanded services from 80 individuals at the beginning of 2008 to just over 90 individuals by year's end
- Day of Caring brought together community volunteers at four client homes to complete necessary home repairs and upkeep
- Giving through Song benefit dinner raised over \$63,000 for client services
- Bike Bash attracted over 100 participants
- Strategic Plan updated in 2008 to reflect expansion of the agency
- Fully implemented new comprehensive Person Centered Planning process for all individuals supported by the agency

GOALS FOR 2009

- Incorporate new positions and information systems into the organization to more effectively address the needs of those supported by the agency
- Continue to be leaders in the field and open to opportunities to serve additional people with developmental disabilities in the community
- Assess, research, and implement a centralized information system
- Further diversify our revenue stream
- Incorporate a Development Director position and finalize our development plan
- Investigate opportunities to further expand Alpha Bookkeeping Service
- Update and improve training provided to employees, including the development of client-specific training videos for each person supported by the agency





MANAGEMENT 2009

Scott Livengood
Chief Executive Officer

West Branch

Rob Burmaster
Branch Director

Craig Eidsmoe
Clinical Manager

Patricia Minton
*Human Resources
Manager*

Collin Capes
*Client Services
Manager*

Corporate

Leslie Kinkade
Development Director

Davina Gilroy
Controller

Joseph Smith
*Financial Services
Manager*

Glen Turner
Lead Bookkeeper

East Branch

Josh Cutler
Branch Director

Chris Allen
Clinical Manager

Kris Brown
*Human Resources
Manager*

Jill Brubacher
*Client Services
Manager*



BOARD OF DIRECTORS 2009

Michele Moored
President

Donald Barker
Bob Breskovich
Stacy Gillett
Parul Houlahan

Brent McCullough
Vice President

Linda Johnson
Mark Johnson
Jim Kuresman

Doug Coleman
Treasurer

Penny Martin
Sherry McNary
Bob Puff

Evelyn Chapman
Secretary

Sally Puff
Wally Tablit
Camille Uhler

INCOME STATEMENT

OPERATING REVENUE

DSHS Payments	\$8,305,261
Grants, Donations, & Fundraising	\$175,205
Private Care Payments	\$124,304
Accounting Services	\$89,343
Other Revenue	\$46,249
TOTAL OPERATING REVENUE	\$8,740,362

OPERATING EXPENSES

Direct Support Wages & Benefits	\$7,092,750
Administrative Wages & Benefits	\$571,282
Vehicle Operation, Insurance, & Transportation	\$206,297
Office Rent	\$156,706
Depreciation	\$133,436
Purchased Services	\$93,176
Accounting Services Wages & Benefits	\$57,959
Maintenance, Repairs, & Facility Expenses	\$47,134
Staff Development & Education	\$44,446
Business Insurance, Dues, Licensing, & Taxes	\$40,761
Office Supplies	\$40,475
Program Supplies & Fees	\$40,408
Telephone & Communication	\$38,019
Minor Equipment	\$24,587
Other Operation Expenses	\$54,435
TOTAL OPERATING EXPENSES	\$8,641,871

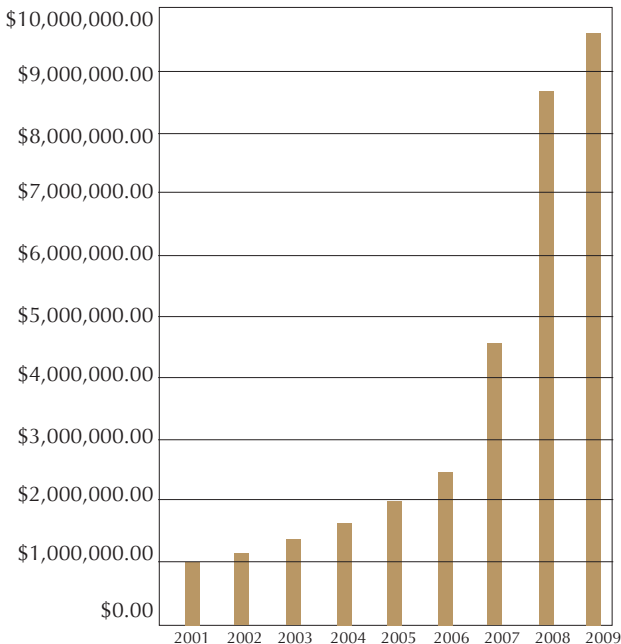
NET OPERATING INCOME **\$98,491**

NON-OPERATING INCOME

Interest/Gain on Investments (\$172,114)

NET INCOME **(\$73,623)**

ANNUAL OPERATING EXPENSES HISTORY



BALANCE SHEET

<u>December 31, 2008</u>	
ASSETS	
Total Current Assets	\$1,404,263
Total Property & Equipment	\$819,675
Total Other Assets	\$1,268,555
TOTAL ASSETS	\$3,492,493
LIABILITIES & NET ASSETS	
Total Current Liabilities	\$653,863
Total Long Term Liabilities	\$72,904
TOTAL LIABILITIES	\$726,767
NET ASSETS	
Temporary Equity	\$18,507
Net Assets, Beginning Of Year	\$2,820,842
Net Operating Income	\$98,491
Interest/Gain on Investments	(\$172,114)
TOTAL NET ASSETS	\$2,765,726
TOTAL LIABILITIES & NET ASSETS	\$3,492,493

MAKING A DIFFERENCE

Together, the Alpha Supported Living Services Team, comprised of its dedicated staff, committed Board of Directors, steadfast government and organizational partners, and generous annual funders and contributors are working to make a significant difference in the lives of those we support.

Charlie



Charlie Potts, 50, strolls out in his bathrobe every morning, opens his front door, picks up the paper, and immediately turns to the latest movie reviews. When greeting Charlie he will welcome you with a big smile, take your hands, and begin to tell you all about his many big plans.

Charlie often talks about "WALLINGFORD!" This is not a reference to the popular Seattle neighborhood, but rather, to his comfortable home on Wallingford Avenue in the Northgate area that he shares with two other men.

Charlie moved into his current home from Rainier School, where he had lived since he was 12 years old. The difficult decision to place him in this institution was made when his aggressive and challenging developmental and behavioral issues became too much for his family to handle. But 32 years later, in 2002, Charlie's family found a supported living home, staffed by

Alpha Supported Living Services, in the community. On a visit to Charlie's house he is quick to show you his room with the main attraction being his calendar. Charlie, who is diagnosed with autism, is very attached to his structured weekly schedule and can become frustrated with any unforeseen changes to his plans. Whether he is going to work, his day program, the movies, out to eat, walks at the mall, renting movies (almost daily), or cooking and cleaning his home, Charlie likes to keep busy. Charlie is also a world traveler and has been supported in taking trips to Disneyland, Mexico, and Las Vegas.

Charlie keeps a busy holiday schedule, making time to visit with his five siblings. If you ask him, he will happily describe the feast he is expecting "TURKEY!," "MASHED TATOES!," "GRAVY!," etc. He is also quick to tell everyone who will listen about his party on "NOVEMBER TWENTY!" Every year, Charlie celebrates with "BALLOON!," "CAKE!," "POP!," and "PIZZA!" the date of his life-changing move from the institution into "WALLINGFORD!"

Those who know Charlie continue to be inspired by his enthusiasm for living life on his own terms.

Kerri



Kerri Meyer is the first to tell you how well she is doing. Kerri, 35, lives in an apartment in Bellevue with her roommate, Sherry. For those that know her now, it is impossible to imagine the journey this sweet, thoughtful woman has endured. Kerri was placed in foster care at the age of

one, and at six, was adopted by her foster mother. Kerri's youth was spent caring for her seven adopted siblings, as well as a fondly remembered time working in the Seattle Mayor's office.

At 22, Kerri's world fell apart. She began to verbally and physically abuse her adopted mother and moved into an adult family home in 1995. For the next five years, Kerri was moved between many adult family homes. She also spent a considerable amount of time at Western State Hospital, where she was heavily medicated and often kept in four-point restraints. Two supported living opportunities proved unsuccessful for Kerri. During these difficult years, she heard voices and it was unclear if she would ever escape the dark world of schizophrenia.

Today, Kerri refers to this period as the "bad time." Alpha Supported Living Services began working with Kerri in January of 2008. For the first time, Kerri's significant medical issues, including diabetes and gastroparesis, which requires J-tube feeding, were at long last being properly addressed. Alpha's health care team initiated a holistic care regime that included facilitating communications between Kerri's long list of doctors. Kerri has lost significant weight and experienced other positive health benefits by taking more responsibility for her own care, administering her own medications, managing her own restrictive diet, and getting regular exercise.

Kerri's long-term case manager at the Division of Developmental Disabilities, who has known her for over ten years, says of Kerri's current support "I could not be more impressed with the services that Alpha is providing and with the skills that Kerri is learning so that she can independently manage her life."

Kerri is moving forward, pursuing her dreams, and inspiring all of us by her example of what is possible for individuals with developmental disabilities when they receive quality support.



We gratefully acknowledge the following individuals and organizations who generously supported the agency's mission in 2008.

INDIVIDUAL SUPPORT

Benefactor

Anonymous
Jacqueline Breskovich
Robert and Barbara Breskovich
Ruth and Steven Gimpel

Patron

Tom Alberg and Judi Beck
Mike and Mary Lee
Barry and Judy Ohai
Robert and Sally Puff

Investor

Carolyn Burkhart
Mary and Jim Dunnam
Stacy and Eric Gillett
Katharyn A. Gerlich
Sharon Lee
Timothy and Tina Lee
Luther McLean
Mary Pat and John Osterhaus
Ron and Anna Rosella
Robert and Mary Stearns
Camille Uhlir

Supporter

Marilyn Anderson
Ruth and Brian Alvensleben
Robert Acteson
Donald and Anne Barker
Linda and David Connell
Andrew Gillett
Hellan Goodhope
Parul Houlahan
Hal and Leslie Harber
Paul Kinney and April Woods
Sherry McNary
Michele Moored
Patrick Piermattei
Sarah and Todd Prodzinski
Leslie Smith and Jim Kelly
Mike and Les Wepler Believer's Fund
James H. and Larry Woods-Palmer

Contributor

Victoria and R. Carver Anderson
Virginia Archbold
Susan Archibald
Fury Bailey
Victoria Barr
Erin A. Bogarte & Theresa Nafziger
Betty Brooking
Lillian Buchanan
Arnold and Jean Burmaster
Anne and David Crandall
Evelyn Chapman
Celia Cohen
Doug Coleman
Duane and Carol Cubbin
John and Sam Dagnen
Edward B. DeGroot

Cathleen Dempsey
Barb Diesel Hoover
Dennis and Joyce Evans
Kate and Brian Fisher
Ray and Hilde Glore
Barbara and David Greenlee
R. Suzanne Hall
Patricia Hraba
Mark and Linda Johnson
Ron and Leslie Kinkade
Robert and Judith Knopp
James Kuresman
Ronald Marshall
Tamara Marson
D.E. and Leslie Martin
MaryAnne and Chuck Martin
Michele McAllister
Jaimie McCausland
D. Brent and Karen McCullough
Robert and Myrtle McNary
Chris and Katie McReynolds
John Morbeck
Francine & Paul Nogaki
Robert and Sandra Nowak
Catherine Potts
Robert and Jennifer Puff
Elizabeth and Jonathan Roberts
Brooks and Jim Romano
Max Rothwell
Fred Simons
Wallace Tablit
Judith Tobin and Michael Baker
Jeffrey and Estella Wallace
Michael and Laurie Wedrosky
Mary Jean and Arnold Williams
Ruth Woods

ORGANIZATIONAL SUPPORT

Premier

Boeing Employees Community Fund

Leader

Lakeside Industries

Partner

Clipped Wings
The Columbia Foundation
Combined Fund Drive
King County
Wells Fargo

Associate

Costco
Ehrlich Donnan Foundation

Matching Gift Employers

Bank of America
Microsoft
Regency Employee Giving Campaign
United Way

MISSION STATEMENT

The mission of Alpha Supported Living Services is to serve individuals with developmental disabilities by providing accessible residential and other support services that will maximize each person's quality of life.

This mission will be accomplished by:

- Treating each client with dignity, respect, and full consideration of individuality and civil and human rights;
- Recognizing our staff members' abilities and enhancing their growth and professional skills;
- Working cooperatively with other individuals and organizations that share our goals; and
- Developing broad-based sources of support to maintain financial stability.

A BRIEF HISTORY

- 1974: The Alpha Home was opened on Queen Anne Hill in Seattle
- 1978: Bellevue Group Home operated by Residence East was opened
- 1981: Seattle Specialized Group Home was opened in Ballard
- 1984: Spring Meadow Group Home was opened in Richmond Beach in Shoreline
- 1998: Spring Meadow merges into Alpha and the agency name is changed to Alpha Spring Meadow Homes
- 1998: The agency begins providing supported living services for the first time (one to four individuals living in their own home with 24-hour staff support)
- 2002: The two group homes (The Alpha Home and Spring Meadow) are closed and the individuals are moved into single-level, accessible homes in Shoreline utilizing the supported living model of service
- 2003: Agency office moved to north Seattle
- 2007: Seattle Specialized merges into Alpha Spring Meadow Homes
- 2007: The agency name is changed to Alpha Supported Living Services
- 2008: Residence East merges into Alpha Supported Living Services
- 2008: Separate Alpha Supported Living Services branch office opened in Bellevue

Alpha Supported Living Services
2611 NE 125th Street, Suite 145
Seattle, Washington 98125
www.alphasls.com